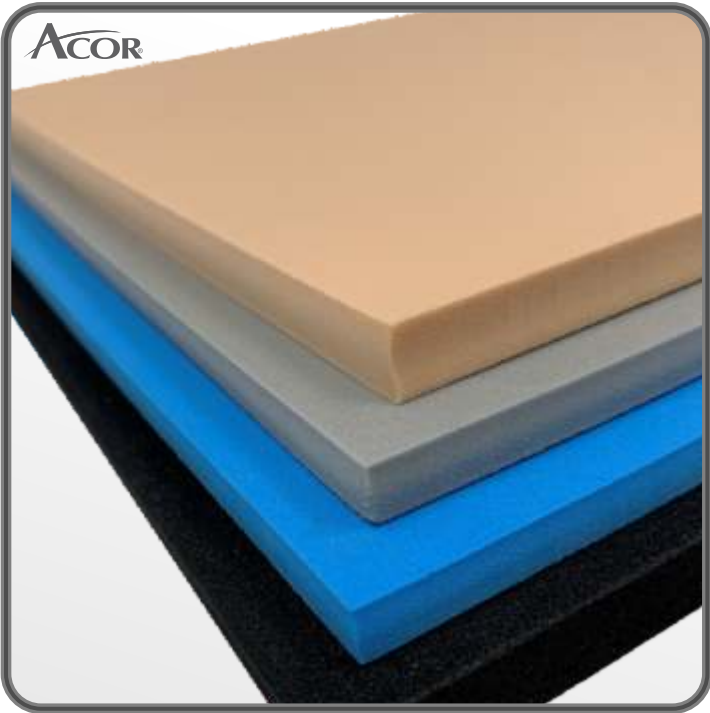


SOFT

P-Cell®



**Durometer:** 20 Shore A (+/- 5)  
**Composition:** Proprietary EVA Composite  
**Molding Temperature:** 225°-275° F, 2-3 min.  
**Grindable:** Yes  
**Sheet Sizes:** 37"x 30" Half Sheet, 37"x 60" Full Sheet  
**Available Colors:** Silver, Light Blue, Pink, Black

**Recommended Uses:** Top covers, AFO interface, distal end pads, diabetic insoles, toe filler flexure backfill, friction management

Available Thicknesses		Available Sheet Sizes		Half Sheet Case Qty.
in.	mm.	Half	Full	Sheets
1/16	1.5	37x30	37x60	48
1/8	3	37x30	37x60	24
3/16	5	37x30	37x60	16
1/4	6	37x30	37x60	12
3/8	10	37x30	37x60	8
1/2	13	37x30	37x60	6
3/4	19	37x30	37x60	4
1	25	37x30	37x60	3

Compare P-Cell® to Similar Products

According to indepedent testing through SATRA, Artech, and the SGS U.S. Testing company, P-Cell® is a superior material to similar industry products.

**Superior Cushioning:** P-Cell® packs down 27% less than the competition.

**Shock Absorption:** P-Cell® absorbs shock 41% more than the competition.

**Tensile Strength:** P-Cell® has 114% greater tensile strength than the competition, resulting in less tearing.

**Moisture Deflection:** P-Cell® deflects moisture 209% more than the competition.

Did You Know?

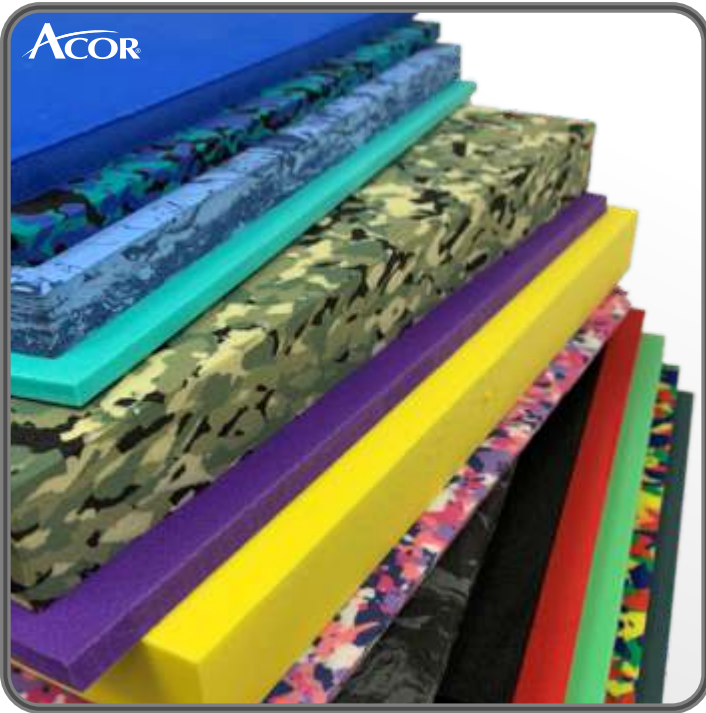
**Acor P-Cell®** has many uses outside the orthopedics industry including packaging, insulation, sound deadening, vibration control, and has even been used in aerospace technologies.

Colors



MEDIUM

Microcel Puff® 35

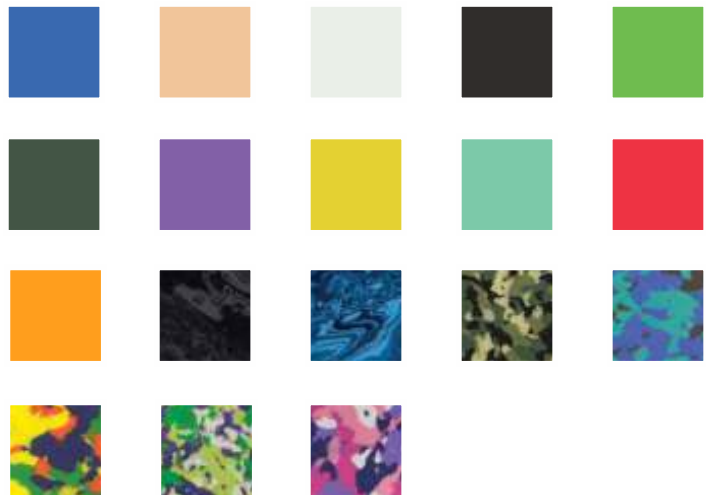


**Durometer:** 35 Shore A (+/- 5)  
**Composition:** Proprietary EVA  
**Molding Temperature:** 225°-275° F, 2-3 min.  
**Grindable:** Yes  
**Sheet Sizes:** 37"x 30" Half Sheet, 37"x 60" Full Sheet  
**Available Colors: Solids-** Blue, Pink, White, Black, Green, Forest Green, Purple, Yellow, Aqua, Red  
**Mixed-** Black Ice, Storm, Green Camouflage, BBA (Blue/Black/Aqua), PPW (Pink/Purple/White), YRBG (Yellow/Red/Blue/Green), GPW (Green/Purple/White)

**Recommended Uses:** Top covers, AFO interface, distal end pads, insoles, toe filler orthotics

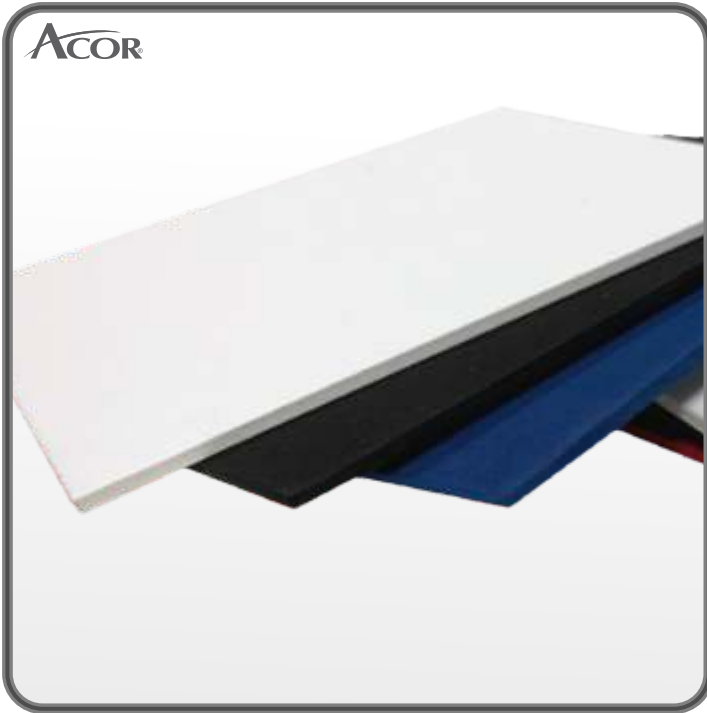
Available Thicknesses		Available Sheet Sizes		Half Sheet Case Qty.
in.	mm.	Half	Full	Sheets
1/16	1.5	37x30	37x60	48
1/8	3	37x30	37x60	24
3/16	5	37x30	37x60	16
1/4	6	37x30	37x60	12
3/8	10	37x30	37x60	8
1/2	13	37x30	37x60	6
5/8	16	37x30	37x60	5
3/4	19	37x30	37x60	4
1	25	37x30	37x60	3

Colors



MEDIUM/FIRM

Microcel Puff® 45



**Durometer:** 45 Shore A (+/- 5)  
**Composition:** EVA  
**Molding Temperature:** 225°-275° F, 2-3 min.  
**Grindable:** Yes  
**Sheet Sizes:** 37"x 30" Half Sheet, 37"x 60" Full Sheet  
**Available Colors:** White, Black, Navy

**Recommended Uses:** Foot orthotic top layers, foot orthotic bottom layers, reinforcing mid layers, lifts, postings, arch fill and prosthetic liners

Available Thicknesses		Available Sheet Sizes		Half Sheet Case Qty.
in.	mm.	Half	Full	Sheets
1/16	1.5	37x30	37x60	48
1/8	3	37x30	37x60	24
3/16	5	37x30	37x60	16
1/4	6	37x30	37x60	12
3/8	10	37x30	37x60	8
1/2	13	37x30	37x60	6
5/8	16	37x30	37x60	5
3/4	19	37x30	37x60	4
1	25	37x30	37x60	3

Colors



Did You Know?

**Shore Durometer** is a method for measuring the hardness of a material, typically polymers, elastomers, rubbers and expanded foams. A higher number on the scale indicate a greater resistance to indentation and thus a harder material. A lower number indicates less resistance and therefore a softer material.

FIRM

Microcel Puff® 55



**Durometer:** 55 Shore A (+/- 5)  
**Composition:** EVA  
**Molding Temperature:** 275°-300° F, 4-5 min.  
**Grindable:** Yes  
**Sheet Sizes:** 34"x 33" Half Sheet, 34"x 67" Full Sheet  
**Available Colors:** Black, Red, Navy, Brown, White

**Recommended Uses:** Foot orthotic base layers, reinforcing mid layers, posting, scaphoid reinforcement, rigidity component

Available Thicknesses		Available Sheet Sizes		Half Sheet Case Qty.
in.	mm.	Half	Full	Sheets
1/16	1.5	34x33	34x67	48
1/8	3	34x33	34x67	24
3/16	5	34x33	34x67	16
1/4	6	34x33	34x67	12
3/8	10	34x33	34x67	8
1/2	13	34x33	34x67	6
5/8	16	34x33	34x67	5
3/4	19	34x33	34x67	4
1	25	34x33	34x67	3

Colors



EXTRA FIRM

Microcel Puff® FM™ (65-70)



**Durometer:** 65 Shore A (+/- 5)  
**Composition:** EVA  
**Molding Temperature:** 275°-300° F, 2-5 min.  
**Grindable:** Yes  
**Sheet Sizes:** 37"x 30" Half Sheet, 37"x 60" Full Sheet  
**Available Colors:** Black, White

**Recommended Uses:** Foot orthotic base layers, reinforcing mid layers, posting, scaphoid reinforcement, rigidity component

Available Thicknesses		Available Sheet Sizes		Half Sheet Case Qty.
in.	mm.	Half	Full	Sheets
1/16	1.5	37x30	37x60	48
1/8	3	37x30	37x60	24
3/16	5	37x30	37x60	16
1/4	6	37x30	37x60	12
3/8	10	37x30	37x60	8
1/2	13	37x30	37x60	6

Colors

